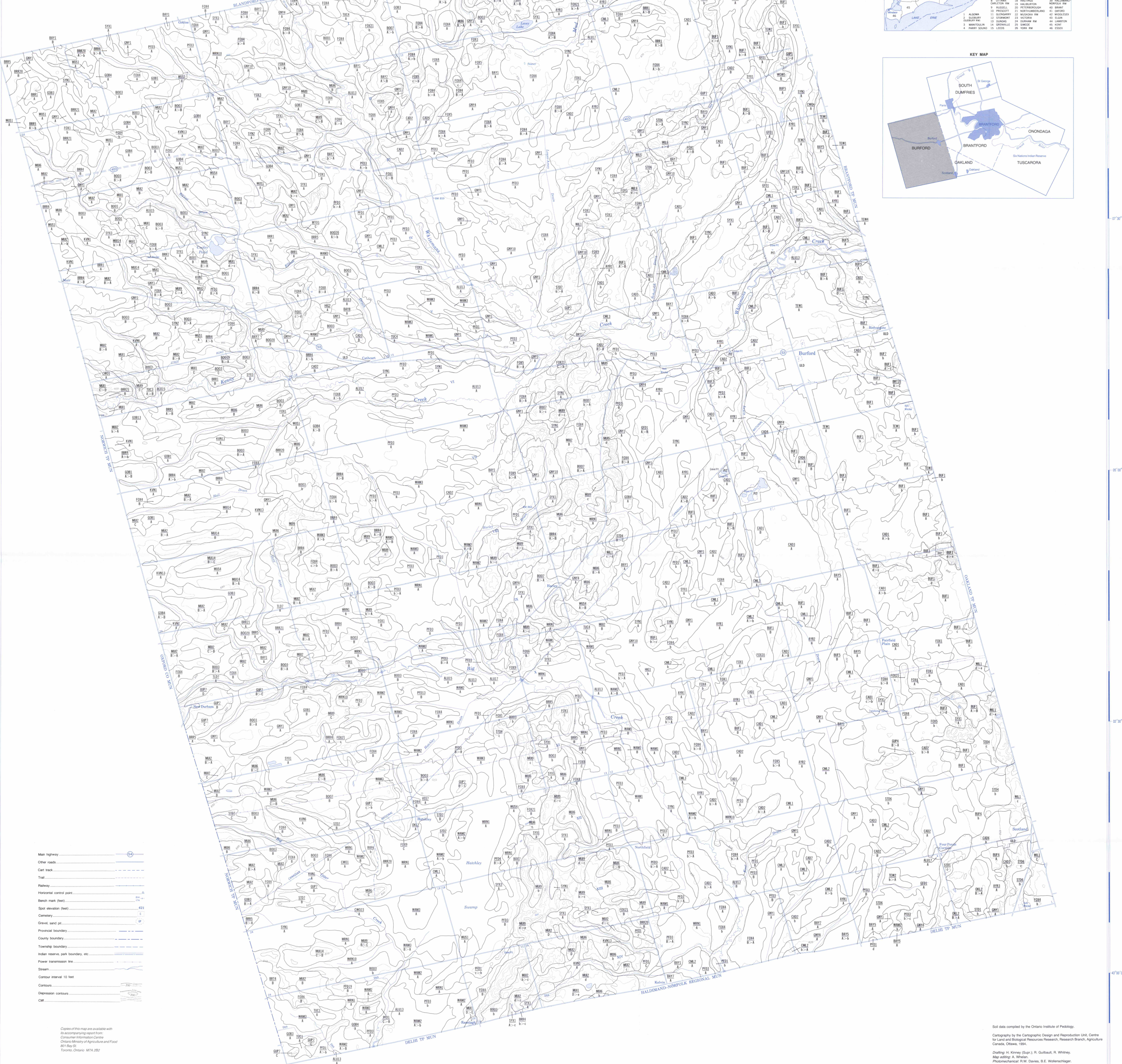
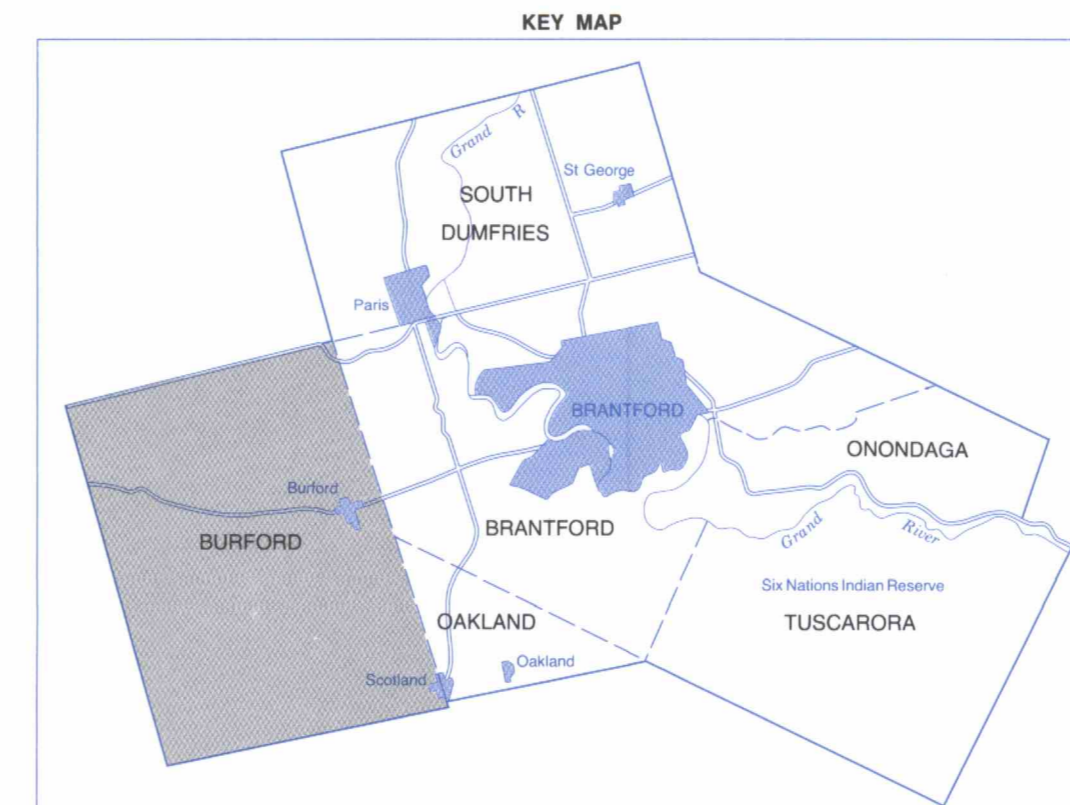
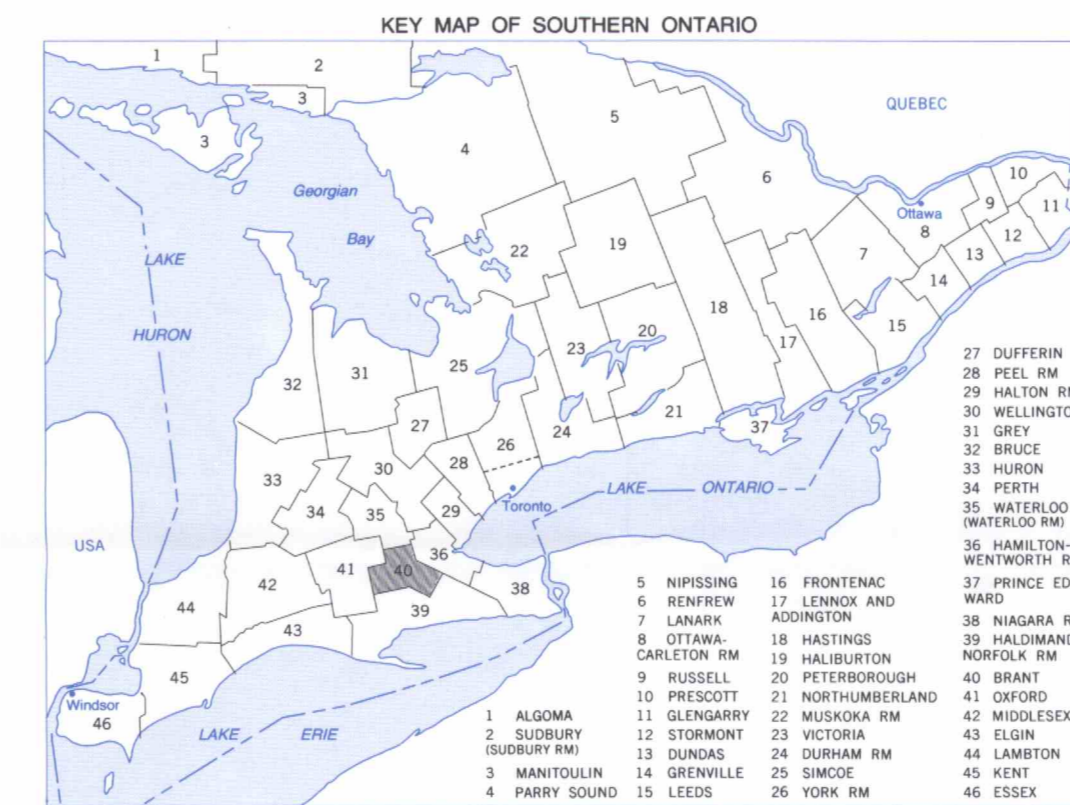
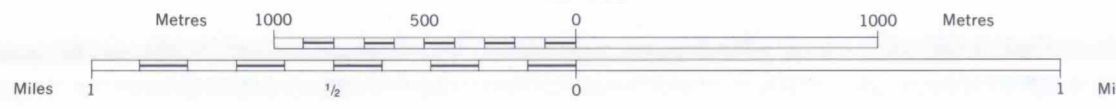


SOILS OF BRANT COUNTY ONTARIO

SOIL SURVEY REPORT No 55

Scale 1:25 000



- Map highway
- Other roads
- Cart track
- Traffic
- Railway
- Historical control post
- Beach mark (low)
- Spot elevation (feet)
- Cemetery
- Great wall pit
- Provincial boundary
- County boundary
- Township boundary
- Indian reserve park boundary, etc.
- Power transmission line
- Stream
- Colour interval 10 feet
- Contour
- Drainage contour
- Other

MAP UNIT SYMBOL	MAP UNIT COMPONENTS	PARENT MATERIALS	DRAINAGE
ALU1	ALU1
ALU2	ALU2
ALU3	ALU3
ALU4	ALU4
ALU5	ALU5
ALU6	ALU6
ALU7	ALU7
ALU8	ALU8
ALU9	ALU9
ALU10	ALU10
ALU11	ALU11
ALU12	ALU12
ALU13	ALU13
ALU14	ALU14
ALU15	ALU15
ALU16	ALU16
ALU17	ALU17
ALU18	ALU18
ALU19	ALU19
ALU20	ALU20
ALU21	ALU21
ALU22	ALU22
ALU23	ALU23
ALU24	ALU24
ALU25	ALU25
ALU26	ALU26
ALU27	ALU27
ALU28	ALU28
ALU29	ALU29
ALU30	ALU30
ALU31	ALU31
ALU32	ALU32
ALU33	ALU33
ALU34	ALU34
ALU35	ALU35
ALU36	ALU36
ALU37	ALU37
ALU38	ALU38
ALU39	ALU39
ALU40	ALU40
ALU41	ALU41
ALU42	ALU42
ALU43	ALU43
ALU44	ALU44
ALU45	ALU45
ALU46	ALU46
ALU47	ALU47
ALU48	ALU48
ALU49	ALU49
ALU50	ALU50
ALU51	ALU51
ALU52	ALU52
ALU53	ALU53
ALU54	ALU54
ALU55	ALU55
ALU56	ALU56
ALU57	ALU57
ALU58	ALU58
ALU59	ALU59
ALU60	ALU60
ALU61	ALU61
ALU62	ALU62
ALU63	ALU63
ALU64	ALU64
ALU65	ALU65
ALU66	ALU66
ALU67	ALU67
ALU68	ALU68
ALU69	ALU69
ALU70	ALU70
ALU71	ALU71
ALU72	ALU72
ALU73	ALU73
ALU74	ALU74
ALU75	ALU75
ALU76	ALU76
ALU77	ALU77
ALU78	ALU78
ALU79	ALU79
ALU80	ALU80
ALU81	ALU81
ALU82	ALU82
ALU83	ALU83
ALU84	ALU84
ALU85	ALU85
ALU86	ALU86
ALU87	ALU87
ALU88	ALU88
ALU89	ALU89
ALU90	ALU90
ALU91	ALU91
ALU92	ALU92
ALU93	ALU93
ALU94	ALU94
ALU95	ALU95
ALU96	ALU96
ALU97	ALU97
ALU98	ALU98
ALU99	ALU99
ALU100	ALU100

Explanation of Map Symbols

Examples: 1. BFO1, 2. BFO6, c-B

Topographic Classes

Numerator	Description	Denominator	Description
A	0-2%	a	Very gently sloping
B	3-6%	b	Gently sloping
C	7-12%	c	Moderately sloping
D	13-20%	d	Strongly sloping
E	21-30%	e	Very steeply sloping

Denominator: c-B provides information on the slopes present in the map distribution. In example 1, only one slope is present in the denominator which means the map distribution is dominated by one slope class (B). In example 2, two distinctive slope classes are needed to characterize the map distribution: a slope being dominant and B slopes subdominant. Proportions of 70:30 are assumed for the dominant and subdominant slope conditions.

The range in slope for the various slope classes are shown in the Topographic Classes table below.

Constraints: Because of the map scale and nature of the soil mapping, the user should understand that many soil boundaries are only approximately located. Also, terrain and boundary data are only approximately located. Also, terrain and boundary data are only approximately located. Also, terrain and boundary data are only approximately located.

Map compiled by the Ontario Institute of Pedology
Copyright by the Cartographic Design and Reproduction Unit, Centre for Land and Biological Resources Research, Research Branch, Agriculture Canada, Ottawa, K1A 0S6
Dusting: H. Kinney (Sup.), R. Galtsoff, R. Whelan
Map design: A. Whelan
Photoreproduction: W. Davies, B.E. Wollenhager
Topography: L. Routhier

Map of Brant County, Ontario, showing soil types, drainage patterns, and topographic features. The map is overlaid with a grid and includes numerous soil type codes and drainage symbols.

Scale 1:25 000

Map of Brant County, Ontario, showing soil types, drainage patterns, and topographic features. The map is overlaid with a grid and includes numerous soil type codes and drainage symbols.

Scale 1:25 000

Map of Brant County, Ontario, showing soil types, drainage patterns, and topographic features. The map is overlaid with a grid and includes numerous soil type codes and drainage symbols.

Scale 1:25 000

