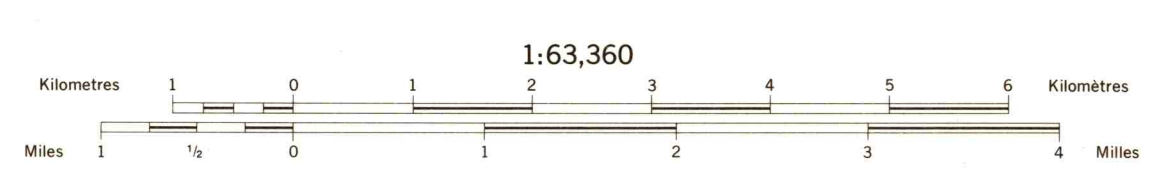


SOILS OF HURON COUNTY ONTARIO NORTH SHEET

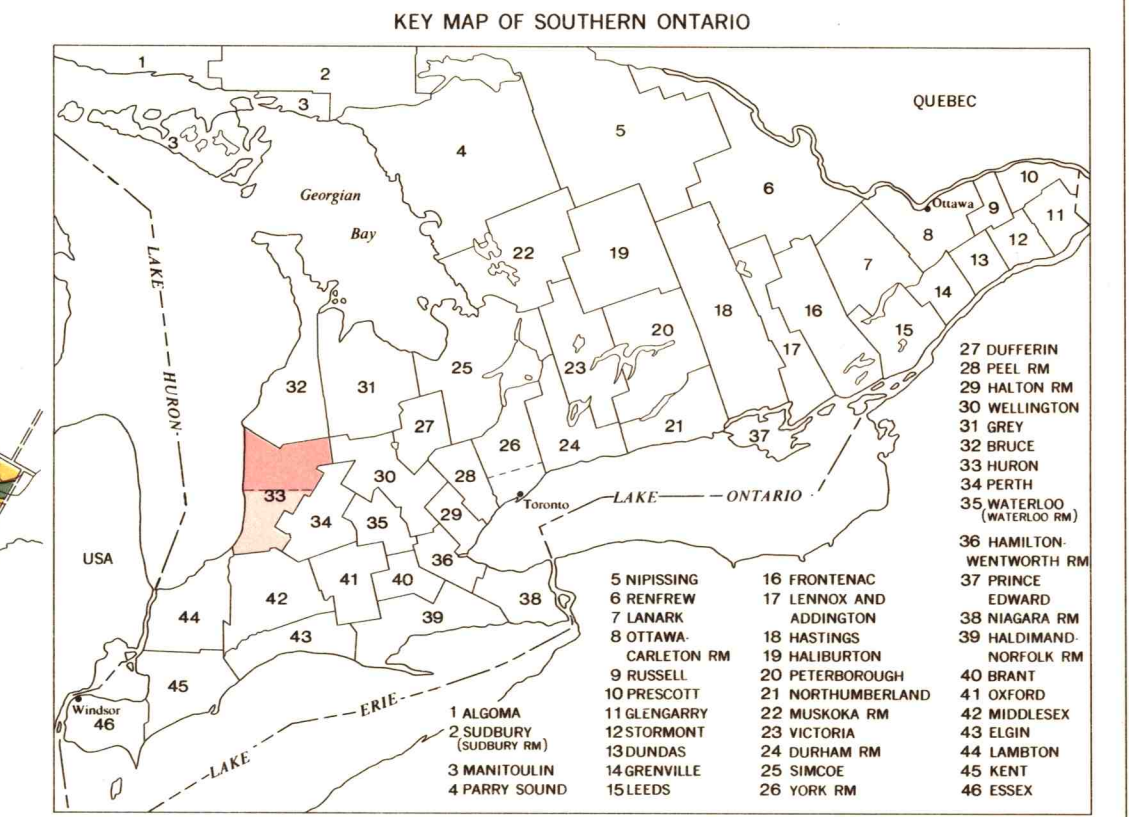
SOIL SURVEY REPORT No. 13



COLOR AND MAP SYMBOL	SERIES AND SURFACE TEXTURE	GREAT GROUP	SOIL MATERIALS	SOIL PROFILE	DRAINAGE	TOPOGRAPHY AND SURFACE STONINESS
Bes	BERRIEN Bes sandy loam	Grey-Brown Podzolic	Sandy outwash over fine-textured silt	6" dark brown sandy loam over slightly mottled sand horizons which are usually fairly well defined; heavy clay ill usually occurs at depths of 3 feet and less.	Imperfect	Undulating Stonefree
Bos	BOOKTON Bos sandy loam	Grey-Brown Podzolic	Sandy outwash over fine-textured silt	5" greenish brown sandy loam over yellow brown sandy loam over dark brown loam; heavy clay ill appears at depths of 3 feet or less.	Good	Strongly undulating to rolling Stonefree
BL	BOTTOMLAND B L variable	Azonal Alluvial	Alluvial	Low lying land along stream courses, subject to flooding; profile immature and horizons poorly defined.	Variable	Variable
Brs	BRADY Brs sandy loam	Grey-Brown Podzolic	Well sorted sandy outwash	6" very dark grey sandy loam surface over slightly mottled sandy loam; A ₂ horizon mottled; B horizon less well defined than in the Burford series.	Imperfect	Undulating Stonefree
Bri	BRISBANE Bri loam	Grey-Brown Podzolic	Well sorted gravelly outwash	6" dark grey gravelly loam over slightly mottled yellow brown loam over mottled brown clay loam; A ₂ and B horizons are well differentiated than in the Burford series.	Imperfect	Level to slightly undulating to rolling Slightly to moderately stony
Bc, Bc, Bc	BROOKSTON Bc clay loam Bc silt loam	Dark Grey Gleysolic	Fine-textured silt	7" dark grey to very dark grey clay loam, silt loam or silt clay loam, highly mottled; poorly defined clay horizons; profile usually gritty throughout.	Poor	Slightly undulating to level Slightly stony
Bg	BURFORD Bg loam	Grey-Brown Podzolic	Well sorted gravelly outwash	5" dark grey gravelly loam surface soil; horizons well defined; parent material consists of gravelly material, usually well sorted.	Good	Undulating to slightly rolling Slightly to moderately stony
Dos	DONNYBROOK Dos sandy loam	Grey-Brown Podzolic	Poorly sorted gravelly outwash	6" brown sandy loam underlain by well defined sandy loam A ₂ and loamy B horizons; parent material dominantly gravel and cobble and occurs in association with pockets of sand and silt; horizons well developed.	Good	Strongly rolling to hilly Moderately to very stony
Ds, D	DUMFRIES Ds sandy loam D loam	Grey-Brown Podzolic	Coarse to medium-textured silt	6" dark greyish brown loam surface; well defined mottled A ₂ and B horizons; parent material contains a large proportion of coarse fragments.	Good	Strongly rolling to hilly Moderately stony
Fs	FOX Fs sandy loam	Grey-Brown Podzolic	Well sorted sandy outwash	5" dark grey sandy loam surface over well-developed A ₂ and B horizons; parent material contains a large proportion of coarse fragments.	Good	Undulating to rolling Stonefree

COLOR AND MAP SYMBOL	SERIES AND SURFACE TEXTURE	GREAT GROUP	SOIL MATERIALS	SOIL PROFILE	DRAINAGE	TOPOGRAPHY AND SURFACE STONINESS
Gil	GILFORD Gil loam	Dark Grey Gleysolic	Well sorted gravelly outwash	8" very dark grey loam over mottled lower horizons; horizons indistinct.	Poor	Level to slightly depressional Stonefree
Gs	GRANBY Gs sandy loam	Dark Grey Gleysolic	Well sorted sandy outwash	8" black sandy loam over mottled grey sand; surface deep and dark; sharp contrast between dark surface and drab grey gel horizon.	Poor	Level to depressional Stonefree
Gul	GUERIN Gul loam	Grey-Brown Podzolic	Coarse to medium-textured silt	6" dark grey loam surface soil over slightly mottled A ₂ and B horizons; underlain by coarse stony ill; stony throughout.	Imperfect	Level to undulating Moderately stony
Hs, Hs	HARRISTON Hs silt loam Hs silt loam	Grey-Brown Podzolic	Medium-textured silt	6" dark grey clay loam or silt loam surface soil; well defined horizons; parent material pale yellowish brown loam; stony throughout.	Good	Strongly undulating to rolling Slightly to moderately stony
Huc, Hus	HURON Huc clay loam Hus silt loam	Grey-Brown Podzolic	Fine-textured silt	6" dark grey clay loam or silt loam surface soil; well developed profile; gritty clay parent material.	Good	Rolling to undulating Slightly stony
Lls, Lls	LISTOWEL Ls loam Ls silt loam	Grey-Brown Podzolic	Medium-textured silt	6" dark brown loam or silt loam surface soil over slightly mottled lower horizons; A ₂ and B horizons less well defined than in Harriston; stony throughout.	Imperfect	Undulating Usually slightly stony
Lyl	LYONS Lyl loam	Dark Grey Gleysolic	Coarse to medium-textured silt	8" very dark grey surface soil over drab grey mottled loam; horizons poorly defined; occasional shallow muck on surface; stony throughout.	Poor	Level to depressional Moderately stony
M	MUCK M variable	Bog	Organic	Black, well-decomposed organic material of varying depths over sand, clay or marl; organic material usually exceeds 18 inches.	Poor	Depressional Stonefree
Pal, Pas	PARKHILL Pal loam Pas silt loam	Dark Grey Gleysolic	Medium-textured silt	7" dark brown loam or silt loam surface over grey highly mottled layers; horizons poorly defined.	Poor	Level Usually slightly stony
Pc, Psc, Ps	PERTH Pc clay loam Psc silt clay loam Ps silt loam	Grey-Brown Podzolic	Fine-textured silt	6" dark grey clay loam, silt loam or silty clay loam surface soil; lower A ₂ and B horizons mottled; profile gritty throughout.	Imperfect	Undulating Slightly stony
Tes	TEEWATER Tes silt loam	Grey-Brown Podzolic	Well sorted gravelly outwash	5" brown silt loam; profile well developed; concentration of stones in B horizon; parent material contains a large proportion of very pale brown coloured stones; well sorted.	Good	Undulating Usually stoniness
Ts, Tc	TOLEDO Ts silt loam Tc clay loam	Dark Grey Gleysolic	Lacustrine	7" very dark grey silt loam or clay loam over grey mottled material; horizons poorly defined.	Poor	Level to undulating Stonefree
Was	WALDEON Was sandy loam	Dark Grey Gleysolic	Sandy outwash over fine-textured silt	8" black sandy loam surface over mottled sand over mottled clay horizons; poorly developed; clay ill usually at depths of 3 feet and less.	Poor	Level to slightly depressional Stonefree

*Note: The new base used for this reproduction has improved hydrographic information which does not fit the soil boundaries originally drawn to fit streams and rivers. The user is warned to regard the location of boundaries for bottom land units (symbols B L and associated soils) with reservation.



- | | |
|--|--|
| <ul style="list-style-type: none"> main highway secondary other roads canal, trail Railways multiple track single track Historical control point Beach mark Spot elevation Cemetery | <ul style="list-style-type: none"> International Provincial County Township Indian reserve Power transmission line Stream Canal elevation depression Cliff |
|--|--|

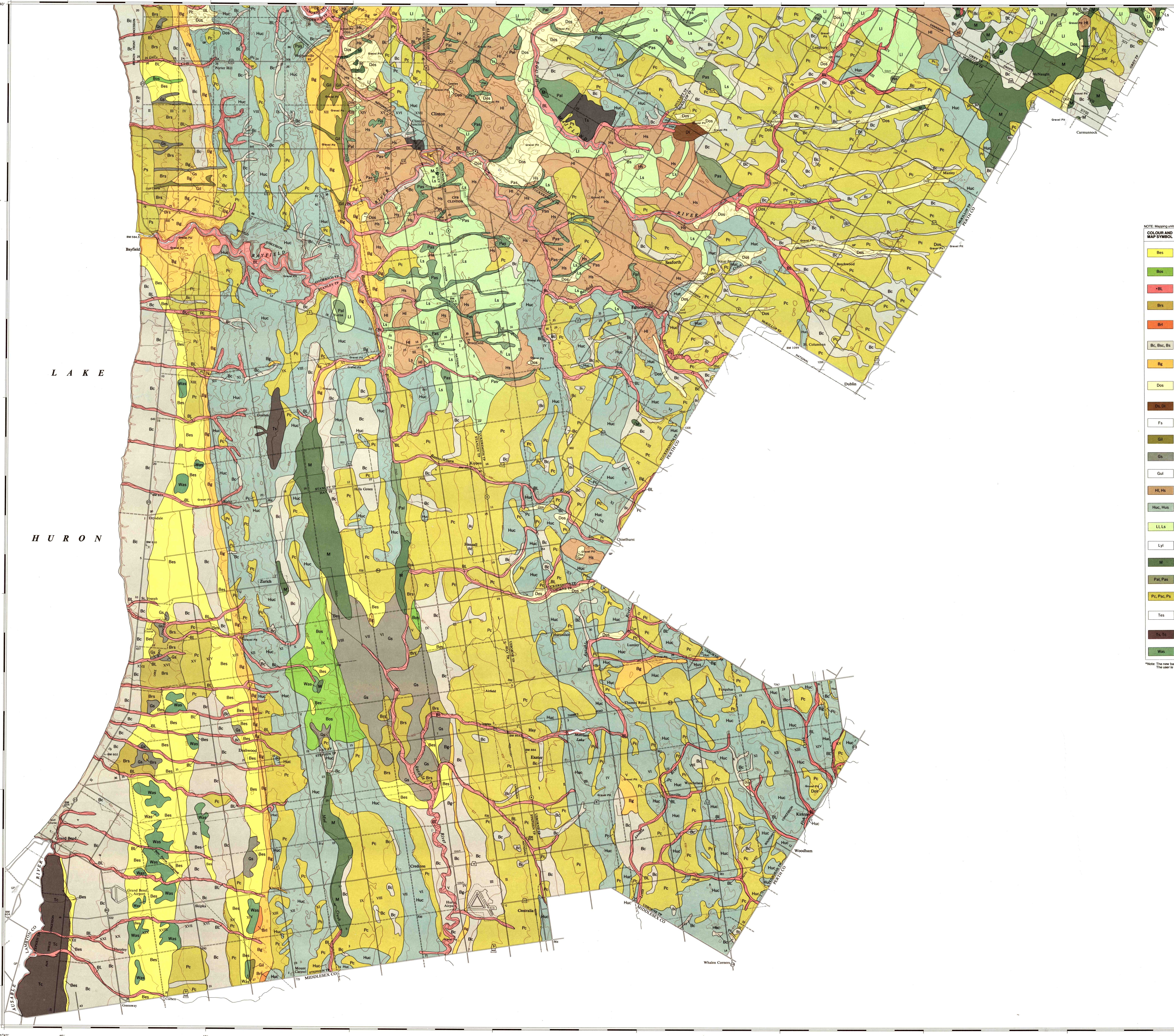
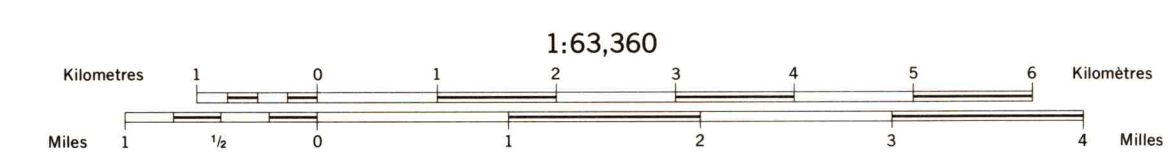
Soil Survey by the Department of Soils, Ontario Agriculture College, Guelph, in co-operation with the Experimental Farm Service, Dominion Department of Agriculture, Ottawa, Surveyed in 1947.

Reproduction of this map authorized by the Copyright Clearance Center, Inc. (CCC) Transactional Reporting Service, Research Branch, Agriculture Canada 1975.

Revised topographic base information and printing supplied by the Reproduction and Distribution Division, Survey and Mapping Branch, Energy, Mines and Resources, Canada.

SOILS OF HURON COUNTY ONTARIO SOUTH SHEET

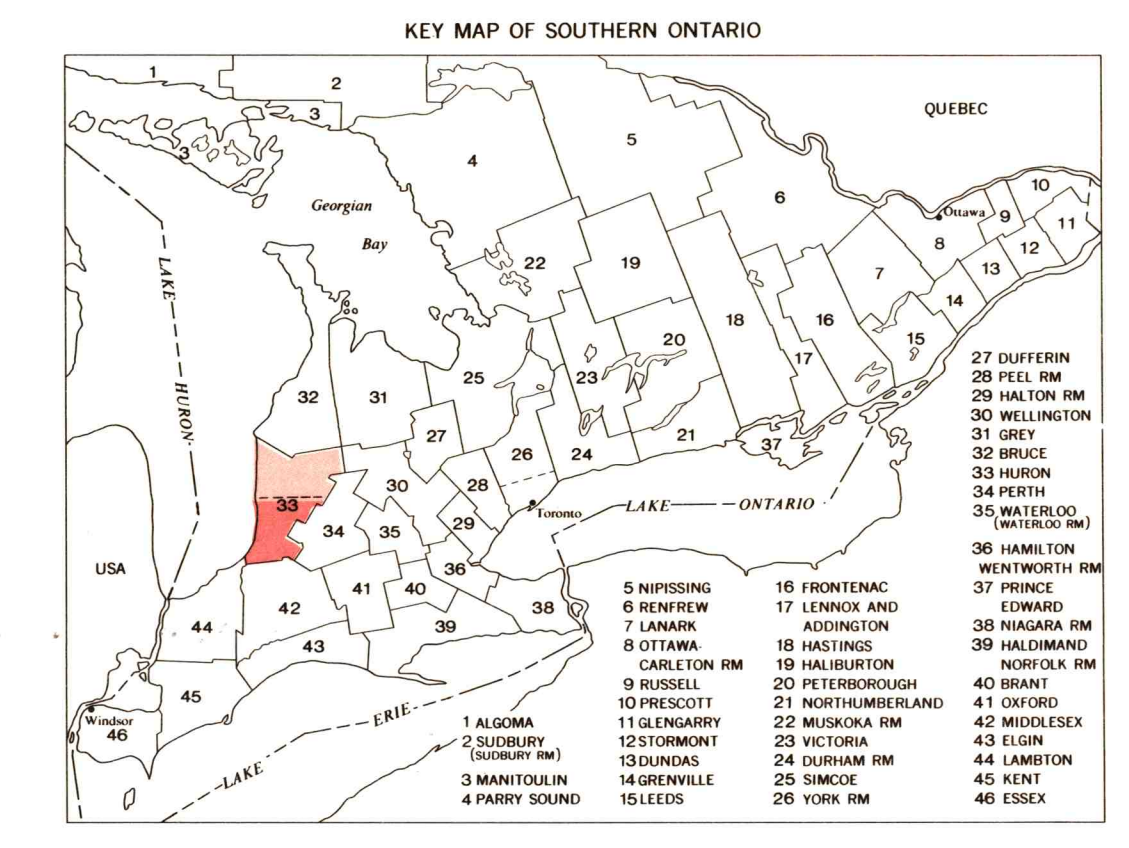
SOIL SURVEY REPORT No. 13



LEGEND

COLOR AND MAP SYMBOL	SERIES AND SURFACE TEXTURE	GREAT GROUP	SOIL MATERIALS	SOIL PROFILE	DRAINAGE	TOPOGRAPHY AND SURFACE STONINESS
Bes	BERRIEN	Bes sandy loam	Grey-Brown Podzolic	Sandy outwash over fine-textured till	Imperfect	Undulating Stoneline
Bos	BOOKTON	Bos sandy loam	Grey-Brown Podzolic	Sandy outwash over fine-textured till	Good	Slightly undulating to rolling Stoneline
+BL	BOTTOMLAND	B.L. variable	Alluvial	Low lying level stream courses subject to flooding; profile immature and horizons poorly defined	Variable	Variable
Brs	BRADY	Brs sandy loam	Grey-Brown Podzolic	Well sorted sandy outwash	Imperfect	Undulating Stoneline
Brl	BRISBANE	Brl loam	Grey-Brown Podzolic	Well sorted gravelly outwash	Imperfect	Level to slightly undulating Stoneline
Bk, BkC, BkL	BROOKSTON	Bk: clay loam BkL: silty clay loam BkC: silty loam	Dark Grey Gleysolic	Fine-textured till	Floor	Slightly undulating to level Stoneline
Bg	BURFORD	Bg loam	Grey-Brown Podzolic	Well sorted gravelly outwash	Good	Undulating to slightly rolling Stoneline
Dos	DONNYBROOK	Dos sandy loam	Grey-Brown Podzolic	Poorly sorted gravelly outwash	Good	Strongly rolling to hilly Moderately to very stony
Ds, DsL	DUMFRIES	Ds sandy loam DsL loam	Grey-Brown Podzolic	Coarse to medium textured till	Good	Strongly rolling to hilly Moderately stony
Fs	FOX	Fs sandy loam	Grey-Brown Podzolic	Well sorted sandy outwash	Good	Undulating to rolling Stoneline
Gll	GILFORD	Gll loam	Dark Grey Gleysolic	Well sorted gravelly outwash	Floor	Level to slightly depressional Stoneline
Gs	GRANBY	Gs sandy loam	Dark Grey Gleysolic	Well sorted sandy outwash	Floor	Level to depressional Stoneline
Gul	GUERN	Gul loam	Grey-Brown Podzolic	Coarse to medium textured till	Imperfect	Level to undulating Stoneline
Hs, HsL	HARRISTON	Hs loam HsL silty loam	Grey-Brown Podzolic	Medium textured till	Good	Strongly undulating to rolling Stoneline
Huc, HucL	HURON	Huc clay loam HucL silty clay loam	Grey-Brown Podzolic	Fine-textured till	Good	Rolling to undulating Stoneline
Ll, LlL	LISTOWEL	Ll loam LlL silty loam	Grey-Brown Podzolic	Medium textured till	Imperfect	Undulating Stoneline
Lyl	LYONS	Lyl loam	Dark Grey Gleysolic	Coarse to medium textured till	Floor	Level to depressional Stoneline
M	MUCK	M variable	Bog	Black, well-decomposed organic material of varying depths over sand, clay or peat organic material. Usually exceeds 18 inches.	Floor	Depressional Stoneline
Pal, PalL	PARKHILL	Pal loam PalL silty loam	Dark Grey Gleysolic	Medium textured till	Floor	Level Stoneline
Pc, Pcl, PclL	PERTH	Pc: clay loam Pcl: silty clay loam PclL: silty loam	Grey-Brown Podzolic	Fine-textured till	Imperfect	Undulating Stoneline
Tes	TEESWATER	Tes silty loam	Grey-Brown Podzolic	Well sorted gravelly outwash	Good	Undulating Stoneline
Ts, TsL	TOLEDO	Ts: silty loam TsL: clay loam	Dark Grey Gleysolic	Lacustrine	Floor	Level to undulating Stoneline
Was	WAUSEON	Was sandy loam	Dark Grey Gleysolic	Sandy outwash over fine-textured till	Floor	Level to slightly depressional Stoneline

*Note: The new base used for this publication has improved hydrographic information which does not fit the soil boundaries originally drawn to fit streams and rivers. The user is advised to report the location of boundaries for bottom lands and units (symbol B.L.) and associated soils with reservation.



BOUNDARIES

International	-----
Provincial	-----
County	-----
Township	-----
Indian reserve	-----
Power transmission line	-----
Section	-----
Contour	-----
Elevation	-----
Depression	-----
Canal	-----

Soil Survey by the Department of Soil, Ocean Agricultural College, Queen's in co-operation with the Experimental Farms Service, Dominion Department of Agriculture (now Land Resource Research Institute, Research Branch, Agriculture Canada, Ottawa, Ontario K1A 0S6)

L A K E
H U R O N