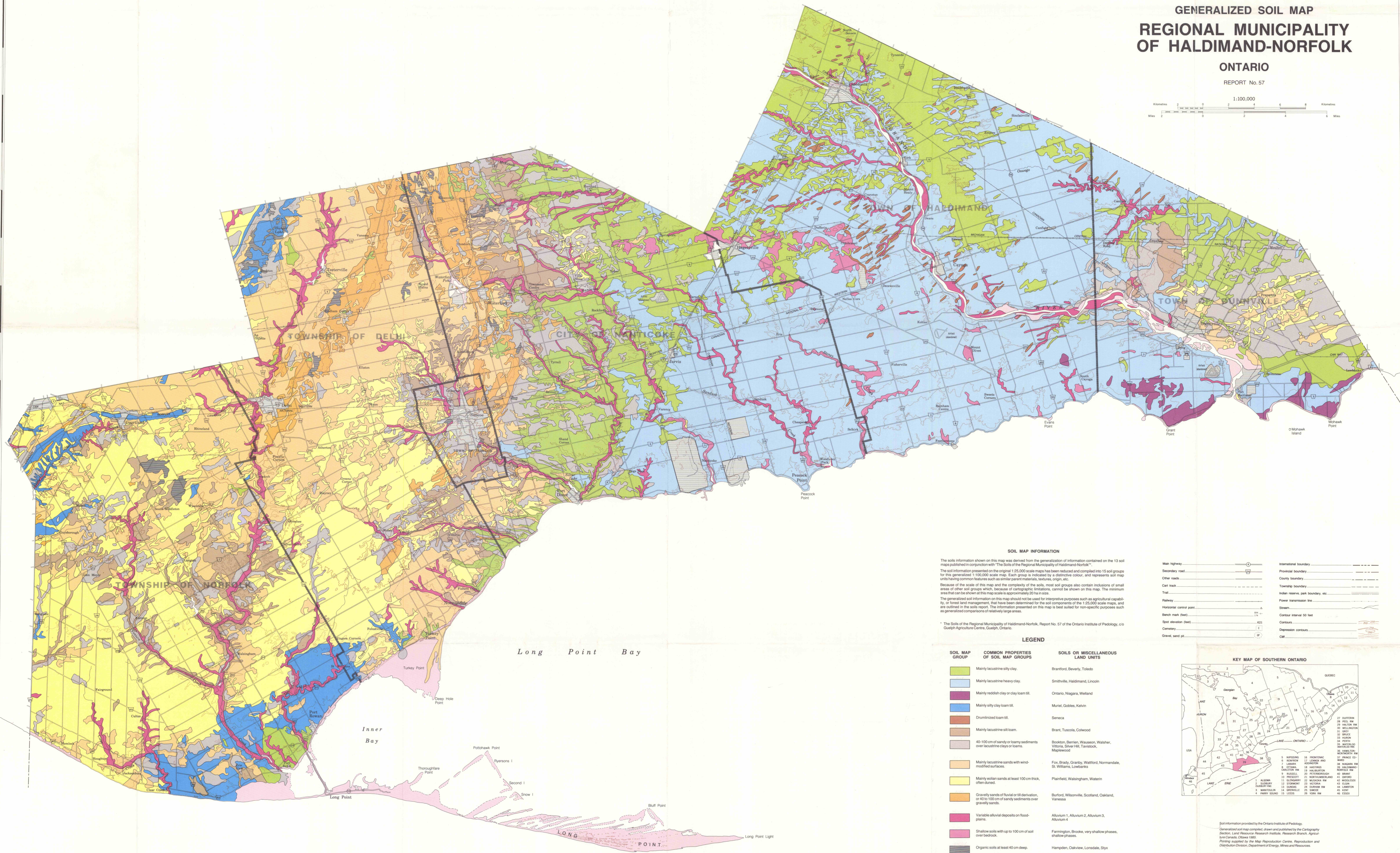
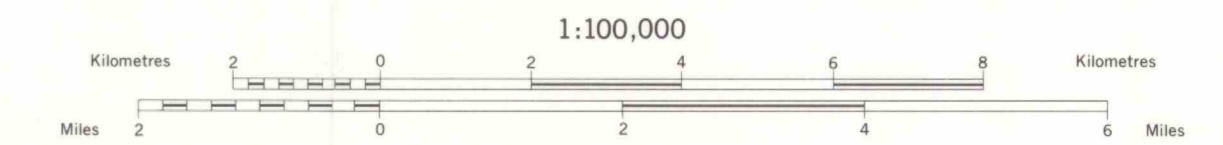


GENERALIZED SOIL MAP REGIONAL MUNICIPALITY OF HALDIMAND-NORFOLK

ONTARIO

REPORT No. 57



SOIL MAP INFORMATION

The soil information shown on this map was derived from the generalization of information contained on the 13 soil maps published in conjunction with "The Soils of the Regional Municipality of Haldimand-Norfolk". The soil information presented on the original 1:25,000 scale maps has been reduced and compiled into 15 soil groups for this generalized 1:100,000 scale map. Each group is indicated by a distinctive colour, and represents soil map units having common features such as similar parent materials, textures, origin, etc. Because of the scale of the map and the complexity of the soils, most soil groups also contain inclusions of small areas of other soil groups which, because of cartographic limitations, cannot be shown on this map. The minimum area that can be shown on this map is approximately 20 ha in size. The generalized soil information on this map should not be used for interpretive purposes such as agricultural capability, or forest land management, that have been determined for the soil components of the 1:25,000 scale maps, and are outlined in the soil report. The information presented on this map is best suited for non-specific purposes such as generalized comparisons of relatively large areas.

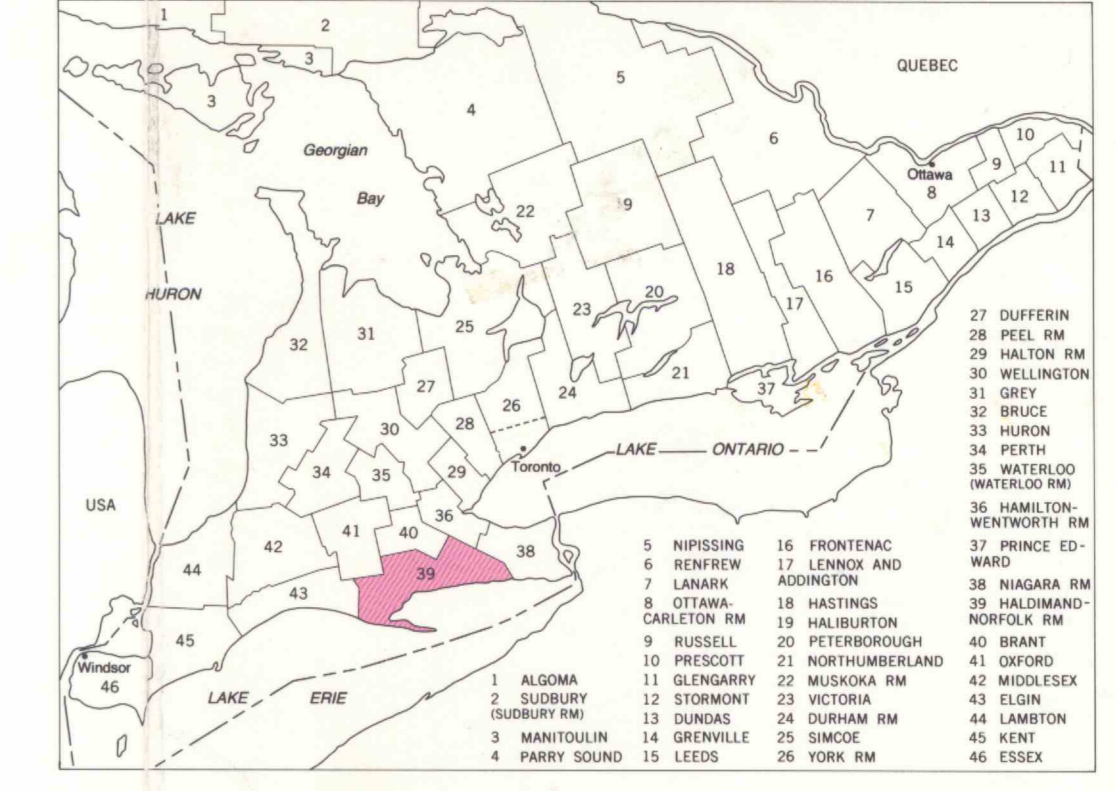
* The Soils of the Regional Municipality of Haldimand-Norfolk, Report No. 57 of the Ontario Institute of Pedology, c/o Queen's Agriculture Centre, Kingston, Ontario.

LEGEND

SOIL MAP GROUP	COMMON PROPERTIES OF SOIL MAP GROUPS	SOILS OR MISCELLANEOUS LAND UNITS
[Light Green]	Mainly lacustrine silty clay.	Brantford, Beverly, Toledo
[Light Blue]	Mainly lacustrine heavy clay.	Smithville, Haldimand, Lincoln
[Light Purple]	Mainly reddish clay or clay loam silt.	Ontario, Niagara, Welland
[Light Yellow]	Mainly silty clay loam silt.	Muriel, Gobles, Kelvin
[Light Orange]	Drumlinized loam silt.	Seneca
[Light Brown]	Mainly lacustrine silt loam.	Brent, Tuscola, Colwood
[Light Tan]	40-100 cm of sandy or loamy sediments over lacustrine clay or loam.	Buckton, Berrien, Wausau, Walsher, Wilcox, Silver Hill, Tavistock, Maplewood
[Light Grey]	Mainly lacustrine sands with wind-modified surfaces.	Fox, Brady, Granby, Watford, Normandale, St. Williams, Lowbarks
[Light Pink]	Mainly eolian sands at least 100 cm thick, often duned.	Plantfield, Wainwright, Watsen
[Light Blue-Gray]	Gravelly sands of fluvial or till derivation, or 40 to 100 cm of sandy sediments over gravelly sands.	Burford, Wilsonville, Scotland, Oakland, Vanessa
[Light Purple-Gray]	Variable alluvial deposits on floodplains.	Albion 1, Albion 2, Albion 3, Albion 4
[Light Green-Gray]	Shallow soils with up to 100 cm of soil over bedrock.	Farmington, Brooke, very shallow phases, shallow phases.
[Light Blue-Gray]	Organic soils at least 40 cm deep.	Hampden, Oakview, Lonsdale, Stry
[Light Green-Gray]	Miscellaneous natural land units.	Complex 1 (Beach-scarp), Complex 2 (Marsh-beach), Complex 3 (Marsh-dune), Complex 4 (Marsh-village), Complex 5 (Beach-aerial), Complex 6 (Beach-ridge), Marsh, Ridge
[Light Green-Gray]	Miscellaneous man-modified land units.	Urban areas, gravel pits, quarries

Main highway	International boundary
Secondary road	County boundary
Clear road	City boundary
Canal	Township boundary
Traffic	Water reserve, park boundary, etc.
Railway	Power transmission line
Horizontal contour point	Stream
Bench mark (feet)	Contour interval 50 feet
Spot elevation (feet)	Contours
Cemetery	Depression contours
Gravel sand pit	City

KEY MAP OF SOUTHERN ONTARIO



Soil information provided by the Ontario Institute of Pedology. Generalized soil map computer drawn and published by the Cartography Section, Land Resources Research Institute, Research Branch, Agriculture Canada, Ottawa 1985. Printing supplied by the Map Reproduction Centre, Reproduction and Distribution Division, Department of Energy, Mines and Resources.

Copies of this map are available from Ontario Institute of Pedology, Queen's Agriculture Centre, P.O. Box 1030, Kingston, Ontario K7H 6N7.