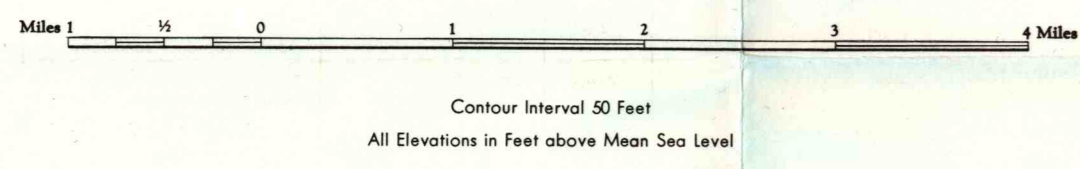


SOIL MAP OF LANARK COUNTY ONTARIO NORTH SHEET

SOIL SURVEY REPORT No. 40

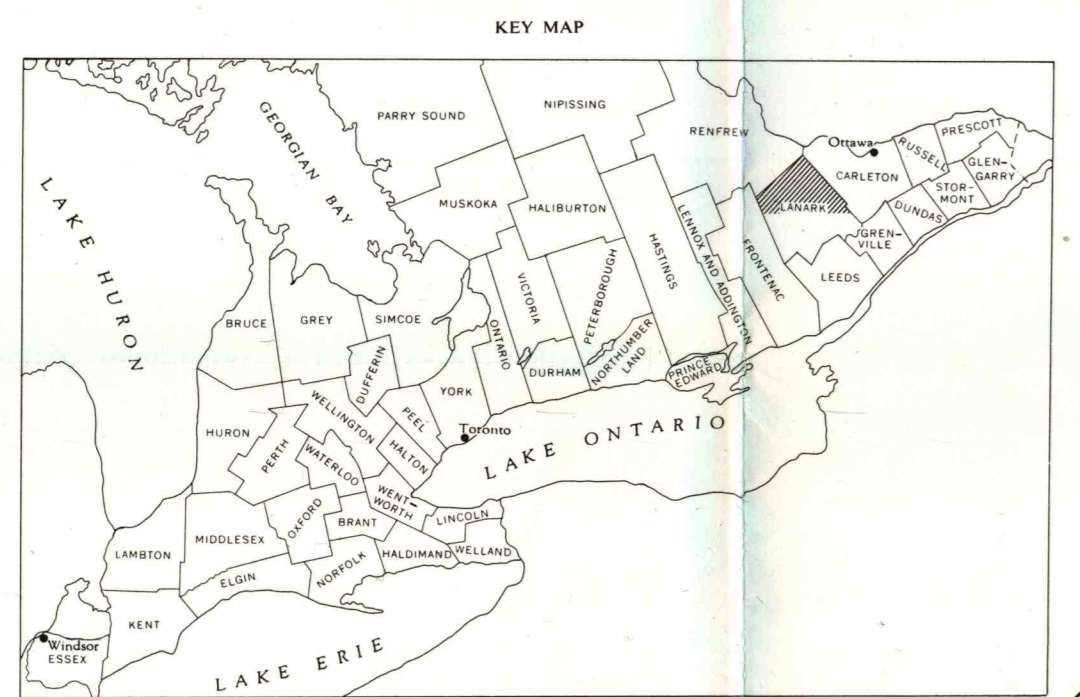
Scale 1 inch to 1 mile or 1:63,360



Contour Interval: 50 Feet
All Elevations in Feet above Mean Sea Level

REFERENCE

.....	School
.....	Church
.....	Post office
.....	Mine or open cut
.....	Quarry
.....	Sand or gravel pit
.....	Embankment, dike, etc.
.....	Stream (intermittent)
.....	Contour depression



SOIL COMPLEXES

MAP SYMBOL	COMPLEX	ACREAGE
Ma-R	MONTAGUE sandy loam - ROCK	227,700
Ta-R	TENNISON sandy loam - ROCK	3,400
Ta-h	TWED sandy loam - ROCK	124,200
WLa-R	WHITE LAKE sandy loam - ROCK	5,300
R-R	ROCK OUTCROP	400

TOPOGRAPHIC CLASSES

A0 - Smooth level	B0 - Irregular level
A1 - Smooth very gently sloping	B1 - Irregular very gently sloping
A2 - Smooth gently sloping	B2 - Irregular gently sloping
A3 - Smooth moderately sloping	B3 - Irregular moderately sloping
A4 - Smooth steeply sloping	B4 - Irregular steeply sloping
A5 - Smooth very steeply sloping	B5 - Irregular very steeply sloping

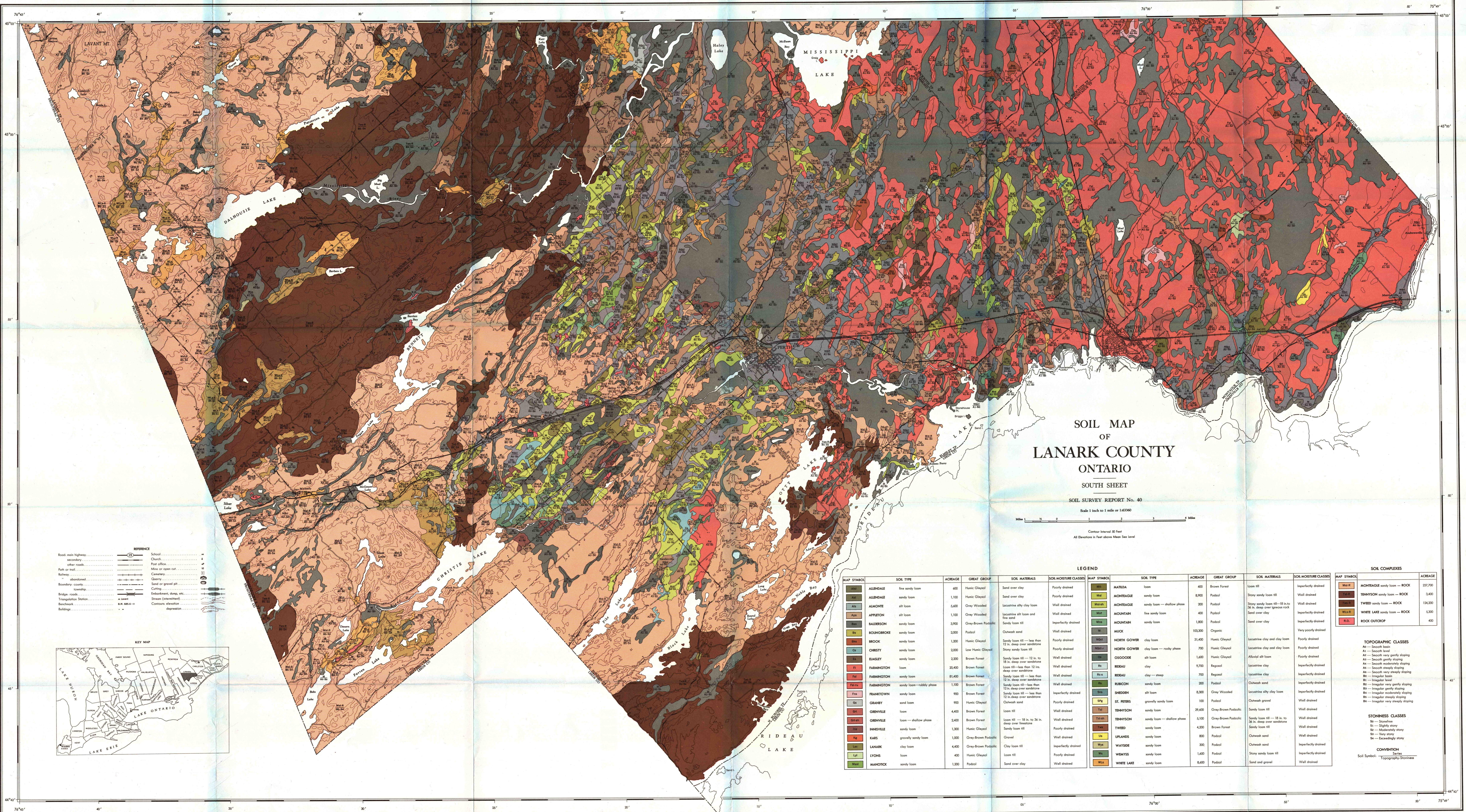
STONINESS CLASSES

S0 - Stoneless
S1 - Slightly stony
S2 - Moderately stony
S3 - Very stony
S4 - Exceedingly stony

CONVENTION
Soil Symbols - Series
Topography - Stoniness

LEGEND

MAP SYMBOL	SOIL TYPE	ACREAGE	GREAT GROUP	SOIL MATERIALS	SOIL MOISTURE CLASSES
Al	ALLEDALE fine sandy loam	400	Humic Gleyol	Sand over clay	Poorly drained
Alc	ALLEDALE sandy loam	1,100	Humic Gleyol	Sand over clay	Poorly drained
Als	ALMONT silt loam	5,600	Grey Wooded	Lacustrine silt clay loam	Well drained
Ap	APPLETON silt loam	1,100	Grey Wooded	Lacustrine silt loam and fine sand	Well drained
As	ALMONT sandy loam	3,900	Grey-Brown Podzolic	Sandy loam till	Imperfectly drained
Ba	BALDWIN sandy loam	2,000	Podzol	Outwash sand	Well drained
Bb	BROOK sandy loam	1,200	Humic Gleyol	Sandy loam till - less than 12 in. deep over sandstone	Poorly drained
Ca	CHRISTY sandy loam	2,000	Low Humic Gleyol	Stony sandy loam till	Poorly drained
Ca1	CHRISTY sandy loam	2,200	Low Humic Gleyol	Sandy loam till - 12 in. to 36 in. deep over sandstone	Well drained
Ca2	CHRISTY sandy loam	2,200	Low Humic Gleyol	Loam till - less than 12 in. deep over sandstone	Well drained
Ca3	CHRISTY sandy loam	20,400	Brown Forest	Sandy loam till - less than 12 in. deep over sandstone	Well drained
Ca4	CHRISTY sandy loam	81,400	Brown Forest	Sandy loam till - less than 12 in. deep over sandstone	Well drained
Ca5	CHRISTY sandy loam - shallow phase	1,100	Brown Forest	Sandy loam till - less than 12 in. deep over sandstone	Well drained
Ca6	CHRISTY sandy loam	900	Brown Forest	Sandy loam till - less than 12 in. deep over sandstone	Imperfectly drained
Ca7	CHRISTY sandy loam	900	Humic Gleyol	Outwash sand	Imperfectly drained
Ca8	CHRISTY sandy loam	4,400	Brown Forest	loam till	Well drained
Ca9	CHRISTY sandy loam - shallow phase	2,400	Brown Forest	Loam till - 18 in. to 36 in. deep over limestone	Well drained
Ca10	CHRISTY sandy loam	1,300	Humic Gleyol	Sandy loam till	Poorly drained
Ca11	KARS gravelly sandy loam	1,000	Grey-Brown Podzolic	'Gravel'	Well drained
Ca12	LANARK clay loam	4,400	Grey-Brown Podzolic	Clay loam till	Imperfectly drained
Ca13	LYONS sandy loam	1,400	Humic Gleyol	loam till	Poorly drained
Ca14	MANITOWIC sandy loam	1,200	Podzol	Sand over clay	Well drained
Ca15	MATILDA loam	400	Brown Forest	loam till	Imperfectly drained
Ca16	MONTAGUE sandy loam	8,900	Podzol	Stony sandy loam till	Well drained
Ca17	MONTAGUE sandy loam - shallow phase	200	Podzol	Stony sandy loam till - 18 in. to 36 in. deep over igneous rock	Well drained
Ca18	MOUNTAIN fine sandy loam	450	Podzol	Sand over clay	Imperfectly drained
Ca19	MOUNTAIN sandy loam	1,800	Podzol	Sand over clay	Imperfectly drained
Ca20	MUCK	103,300	Organic		Very poorly drained
Ca21	NORTH GOWER clay loam	31,400	Humic Gleyol	Lacustrine clay and clay silt	Poorly drained
Ca22	NORTH GOWER clay loam - rocky phase	700	Humic Gleyol	Lacustrine clay and clay loam	Poorly drained
Ca23	OSGOODE silt loam	1,600	Humic Gleyol	Alluvial silt loam	Poorly drained
Ca24	RIDEAU clay	9,700	Regosol	Lacustrine clay	Imperfectly drained
Ca25	RIDEAU clay - steep	700	Regosol	Lacustrine clay	Imperfectly drained
Ca26	RUBICON sandy loam	200	Podzol	Outwash sand	Imperfectly drained
Ca27	SHEDDEN silt loam	8,300	Grey Wooded	Lacustrine silt clay loam	Imperfectly drained
Ca28	ST. PETERS gravelly sandy loam	100	Podzol	Outwash gravel	Well drained
Ca29	TENNISON sandy loam	29,600	Grey-Brown Podzolic	Sandy loam till	Well drained
Ca30	TENNISON sandy loam - shallow phase	5,100	Grey-Brown Podzolic	Sandy loam till - 18 in. to 36 in. deep over sandstone	Well drained
Ca31	TWED sandy loam	4,200	Brown Forest	Sandy loam till	Well drained
Ca32	UPLANDS sandy loam	800	Podzol	Outwash sand	Well drained
Ca33	WAYSIDE sandy loam	300	Podzol	Outwash sand	Imperfectly drained
Ca34	WENTYS sandy loam	1,600	Podzol	Stony sandy loam till	Imperfectly drained
Ca35	WHITE LAKE sandy loam	8,600	Podzol	Sand and gravel	Well drained

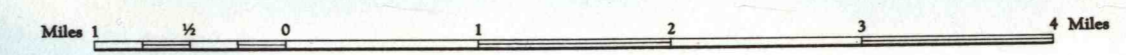


**SOIL MAP
OF
LANARK COUNTY
ONTARIO**

SOUTH SHEET

SOIL SURVEY REPORT No. 40

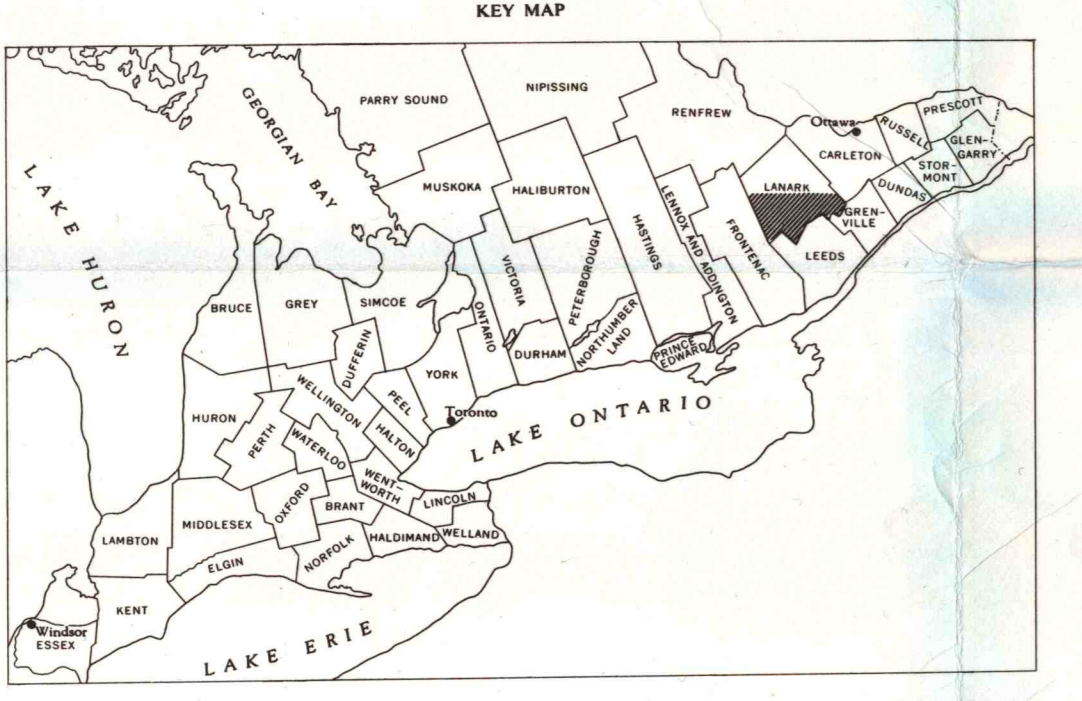
Scale 1 inch to 1 mile or 1:63360



Contour Interval 20 Feet
All Elevations in Feet above Mean Sea Level

REFERENCE

.....	School
.....	Church
.....	Post office
.....	New or open cell
.....	Cemetery
.....	Quarry
.....	Sand or gravel pit
.....	Cutting
.....	Embankment, dump, etc.
.....	Stream (intermittent)
.....	Contours, elevation
.....	depression



MAP SYMBOL	SOIL TYPE	ACREAGE	GREAT GROUP	SOIL MATERIALS	SOIL MOISTURE CLASSES	MAP SYMBOL	SOIL TYPE	ACREAGE	GREAT GROUP	SOIL MATERIALS	SOIL MOISTURE CLASSES	MAP SYMBOL	SOIL COMPLEXES	ACREAGE
Al	ALLEDALE fine sandy loam	400	Humic Clayey	Sand over clay	Poorly drained	Mt	MATILDA loam	400	Brown Forest	loam till	Imperfectly drained	Mo	MONTEAGUE sandy loam - ROCK	237,700
As	ALLEDALE sandy loam	1,100	Humic Clayey	Sand over clay	Poorly drained	Md	MONTEAGUE sandy loam	8,900	Podzol	Stony sandy loam till	Well drained	Ts	TENNISON sandy loam - ROCK	5,400
At	ALMORTE silt loam	5,400	Grey Wooded	Lacustrine silty clay loam	Well drained	Md-sh	MONTEAGUE sandy loam - shallow phase	200	Podzol	Stony sandy loam till - 18 in. to 36 in. deep over igneous rock	Well drained	Ts-d	TWIBED sandy loam - ROCK	124,200
Aw	APPLETON silt loam	1,100	Grey Wooded	Lacustrine silty loam and fine sand	Well drained	Mt-sh	MOUNTAIN fine sandy loam	400	Podzol	Sand over clay	Imperfectly drained	Wt	WHITE LAKE sandy loam - ROCK	5,300
Ba	BALDRISON sandy loam	3,900	Grey-Brown Podzolic	Sandy loam till	Imperfectly drained	Mt-s	MOUNTAIN sandy loam	1,800	Podzol	Sand over clay	Imperfectly drained	Wt-d	WHITE LAKE sandy loam - ROCK	400
Bb	BALDRISON sandy loam	2,000	Podzol	Outwash sand	Well drained	Mt-s	MOUNTAIN sandy loam	103,300	Organic		Very poorly drained			
Bc	BROOK sandy loam	1,200	Humic Clayey	Sandy loam till - less than 12 in. deep over sandstone	Poorly drained	Nt	NORTH GOWER clay loam	31,400	Humic Clayey	lacustrine clay and clay loam	Poorly drained			
Ca	CANBY sandy loam	2,000	Low Humic Clayey	Stony sandy loam till	Poorly drained	Nt-d	NORTH GOWER clay loam - rocky phase	700	Humic Clayey	lacustrine clay and clay loam	Poorly drained			
Cb	CRISLEY sandy loam	2,200	Brown Forest	Sandy loam till - 12 in. to 18 in. deep over sandstone	Well drained	Og	OSGOODE silt loam	1,600	Humic Clayey	Alluvial silt loam	Poorly drained			
Ca	FARMINGTON loam	20,400	Brown Forest	Loam till - less than 12 in. deep over sandstone	Well drained	Rc	REXDAU clay	9,700	Regosol	lacustrine clay	Imperfectly drained			
Fa	FARMINGTON sandy loam	81,400	Brown Forest	Sandy loam till - less than 12 in. deep over sandstone	Well drained	Rc-s	REXDAU clay - steep	700	Regosol	lacustrine clay	Imperfectly drained			
Fb	FARMINGTON sandy loam - bubbly phase	1,100	Brown Forest	Sandy loam till - less than 12 in. deep over sandstone	Well drained	Rc-s	RUBICON sandy loam	200	Podzol	Outwash sand	Imperfectly drained			
Fr	FRANTOWN sandy loam	900	Brown Forest	Sandy loam till - less than 12 in. deep over sandstone	Imperfectly drained	Sa	SNEDDEN silt loam	8,300	Grey Wooded	lacustrine silty clay loam	Imperfectly drained			
Ga	GRANBY sand loam	900	Humic Clayey	Outwash sand	Poorly drained	Sp	ST. PETERS gravely sandy loam	100	Podzol	Outwash gravel	Well drained			
Gb	GRANBY loam	4,400	Brown Forest	loam till	Well drained	Td	TENNISON sandy loam	29,400	Grey-Brown Podzolic	Sandy loam till	Well drained			
Gc	GRANVILLE loam - shallow phase	2,400	Brown Forest	loam till - 18 in. to 36 in. deep over limestone	Well drained	Td-sh	TENNISON sandy loam - shallow phase	5,100	Grey-Brown Podzolic	Sandy loam till - 18 in. to 36 in. deep over sandstone	Well drained			
Gd	GRANVILLE sandy loam	1,300	Humic Clayey	Sandy loam till	Poorly drained	Ts	TWIBED sandy loam	4,200	Brown Forest	Outwash sand	Well drained			
Ka	KARS gravely sandy loam	1,000	Grey-Brown Podzolic	Gravel	Well drained	Ua	UPLANDS sandy loam	800	Podzol	Outwash sand	Imperfectly drained			
Lk	LANARK clay loam	4,400	Grey-Brown Podzolic	Clay loam till	Imperfectly drained	Wa	WATSIDE sandy loam	300	Podzol	Outwash sand	Imperfectly drained			
Ll	LYONS loam	400	Humic Clayey	loam till	Poorly drained	Wb	WATSIDE sandy loam	1,600	Podzol	Stony sandy loam till	Imperfectly drained			
Mt	MANOTICK sandy loam	1,200	Podzol	Sand over clay	Well drained	Wl	WHITE LAKE sandy loam	8,400	Podzol	Sand and gravel	Well drained			

TOPOGRAPHIC CLASSES

A0	Smooth loam
A1	Smooth level
A2	Smooth very gently sloping
A3	Smooth gently sloping
A4	Smooth moderately sloping
A5	Smooth steeply sloping
A6	Smooth very steeply sloping
B0	Irregular level
B1	Irregular very gently sloping
B2	Irregular gently sloping
B3	Irregular moderately sloping
B4	Irregular steeply sloping
B5	Irregular very steeply sloping

STONINESS CLASSES

S0	Structureless
S1	Slightly stony
S2	Moderately stony
S3	Very stony
S4	Exceedingly stony

CONVENTION

Soil Symbol, Series, Topography/Stoniness