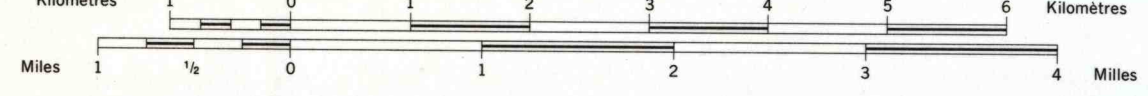


SOILS OF PETERBOROUGH COUNTY ONTARIO NORTH SHEET

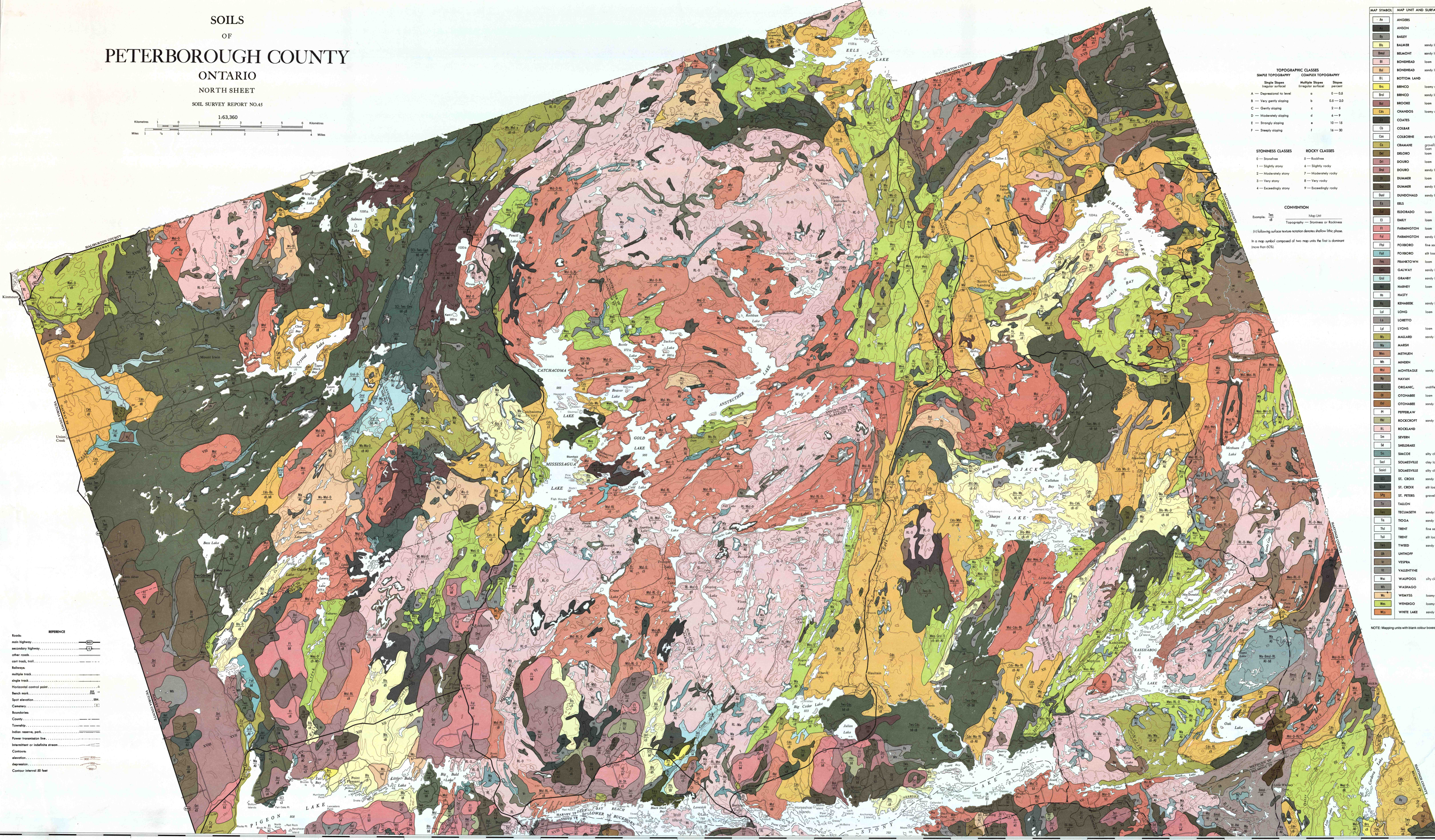
SOIL SURVEY REPORT NO. 45

1:63,360



REFERENCE

main highway	
secondary highway	
other roads	
car track, trail	
Railways	
multiple track	
single track	
Horizontal control point	
Bench mark	
Spot elevation	
Contour	
Contour interval 50 feet	



TOPOGRAPHIC CLASSES

Simple Topography	Multiple Slopes Irregular Surface	Slopes percent
A — Suppressed to level	0	0 — 0.5
B — Very gently sloping	1	0.5 — 2.0
C — Gently sloping	2	2 — 6
D — Moderately sloping	3	6 — 9
E — Strongly sloping	4	10 — 15
F — Steeply sloping	5	16 — 30

STONINESS CLASSES

0 — Smooth	1 — Slightly stony	2 — Moderately stony	3 — Very stony	4 — Exceedingly stony
------------	--------------------	----------------------	----------------	-----------------------

ROCKY CLASSES

1 — Rockless	2 — Slightly rocky	3 — Moderately rocky	4 — Very rocky	5 — Exceedingly rocky
--------------	--------------------	----------------------	----------------	-----------------------

CONVENTION

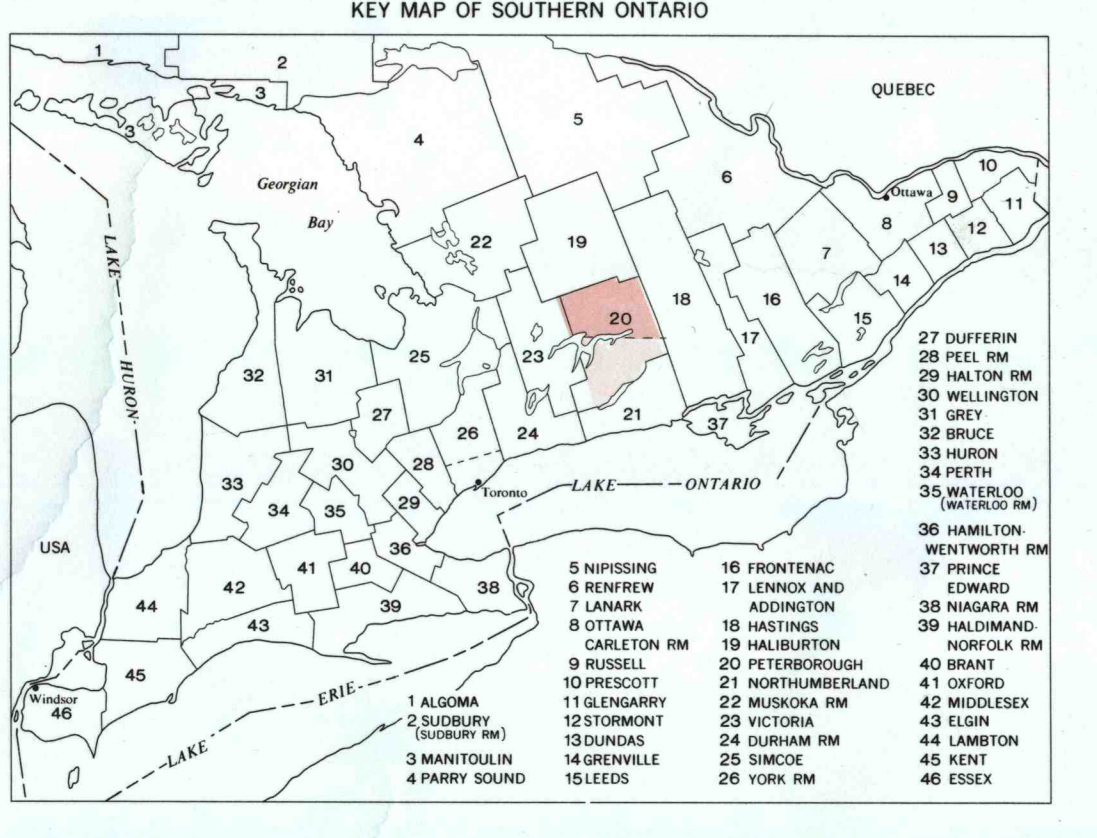
Example:

(1) Following surface texture notation denotes Andisol Mfc phase

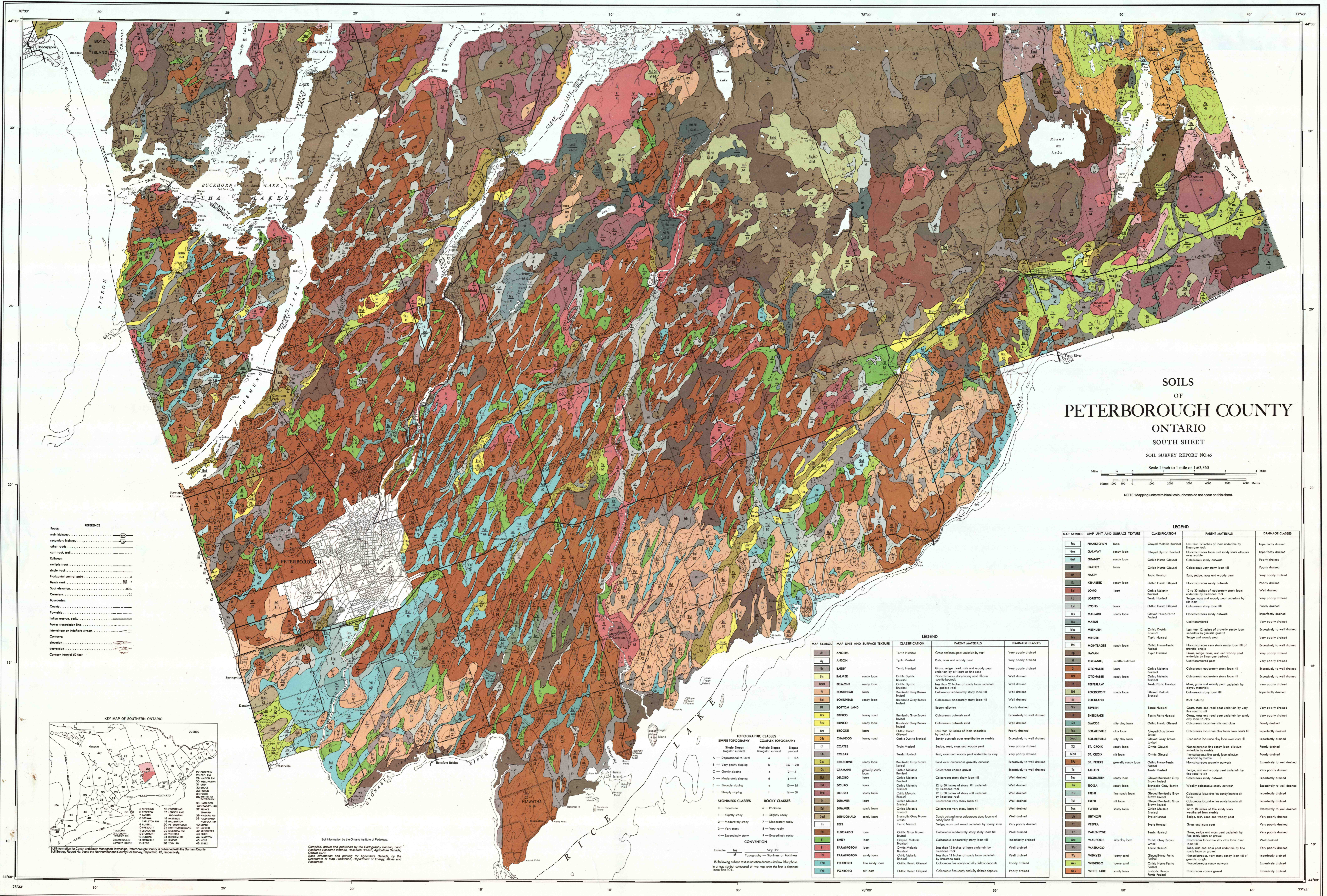
(2) In a map symbol composed of two map units the first is dominant and the second is subordinate

MAP SYMBOL	MAP UNIT AND SURFACE TEXTURE	CLASSIFICATION	PARENT MATERIALS	DRAINAGE CLASSES
	ANDER	Terric Humusol	Grass and moss peat underlain by peat	Very poorly drained
	ANDON	Typic Humusol	Rich, moss and woody peat	Very poorly drained
	BABIT	Terric Humusol	Grass, sedge, reed, oak and woody peat underlain by silty loam or fine sand	Very poorly drained
	BALMER	sandy loam Orthic Dystric Brunisol	Heterogeneous stony loamy sand fill over gravelly bedrock	Well drained
	BELMONT	sandy loam Orthic Dystric Brunisol	Less than 20 inches of sandy loam underlain by gravelly rock	Well drained
	BONDHEAD	loam Brunisolic Gray Brown Brunisol	Calcareous moderately stony loam fill	Well drained
	BOTTOM LAND	loam Brunisolic Gray Brown Brunisol	Recent alluvium	Poorly drained
	BRINCO	loamy sand Brunisolic Gray Brown Brunisol	Calcareous outwash sand	Excessively to well drained
	BRINCO	loam Brunisolic Gray Brown Brunisol	Calcareous outwash sand	Well drained
	BROCKE	loam Orthic Humic Gleysol	Less than 12 inches of loam underlain by bedrock	Poorly drained
	CHANDOS	loam Orthic Dystric Brunisol	Sandy outwash over amphibolite or marble	Excessively to well drained
	COATES	loam Typic Humusol	Sedge, reed, moss and woody peat	Very poorly drained
	COLBAR	loam Terric Humusol	Rich, moss and woody peat underlain by clay	Very poorly drained
	COLBINE	sandy loam Brunisolic Gray Brown Brunisol	Sand over calcareous gravelly outwash	Excessively to well drained
	CRAMARE	sandy sandy loam Orthic Melanic Brunisol	Calcareous coarse gravel	Excessively to well drained
	DECORD	loam Orthic Melanic Brunisol	Calcareous stony loam fill	Well drained
	DOURD	loam Orthic Melanic Brunisol	12 to 30 inches of stony fill underlain by limestone rock	Well drained
	DOURD	sandy loam Orthic Melanic Brunisol	12 to 30 inches of stony soil underlain by limestone rock	Well drained
	DUNMER	loam Orthic Melanic Brunisol	Calcareous very stony loam fill	Well drained
	DUNMER	sandy loam Orthic Melanic Brunisol	Calcareous very stony loam fill	Well drained
	DURDONALD	sandy loam Brunisolic Gray Brown Brunisol	Sandy outwash over calcareous stony loam and sandy loam fill	Well drained
	EELS	loam Terric Humusol	Sedge, moss and woody peat underlain by loamy sand	Very poorly drained
	ELDORADO	loam Orthic Gray Brown Brunisol	Calcareous moderately stony loam fill	Well drained
	EMLY	loam Gleysol Melanic Brunisol	Calcareous moderately stony loam fill	Imperfectly drained
	FARMINGTON	loam Orthic Melanic Brunisol	Less than 12 inches of loam underlain by limestone rock	Well drained
	FARMINGTON	sandy loam Orthic Melanic Brunisol	Less than 12 inches of sandy loam underlain by limestone rock	Well drained
	FOXBORO	fine sandy loam Orthic Humic Gleysol	Calcareous fine sandy and silty silt-loam deposits	Poorly drained
	FOXBORO	silt loam Orthic Humic Gleysol	Calcareous fine sandy and silty silt-loam deposits	Poorly drained
	FRANKTON	sandy loam Gleysol Melanic Brunisol	Less than 12 inches of loam underlain by limestone rock	Imperfectly drained
	GALWAY	sandy loam Gleysol Dystric Brunisol	Noncalcareous loam and sandy loam alluvium	Imperfectly drained
	GRANBY	sandy loam Orthic Humic Gleysol	Calcareous sandy outwash	Poorly drained
	HARNEY	loam Orthic Humic Gleysol	Calcareous very stony loam fill	Poorly drained
	HASTY	loam Typic Humusol	Rich, sedge, moss and woody peat	Very poorly drained
	KENAREK	sandy loam Orthic Humic Gleysol	Noncalcareous sandy outwash	Poorly drained
	LONG	loam Orthic Melanic Brunisol	12 to 30 inches of moderately stony loam underlain by limestone rock	Well drained
	LORETTO	loam Terric Humusol	Sedge, moss and woody peat underlain by silt loam	Very poorly drained
	LYONS	loam Orthic Humic Gleysol	Calcareous stony loam fill	Poorly drained
	MALLARD	sandy loam Gleysol Humic-Ferri-Podsol	Noncalcareous sandy outwash	Imperfectly drained
	MARSH	loam Undifferentiated	Undifferentiated	Very poorly drained
	METHEN	loam Orthic Dystric Brunisol	Less than 12 inches of gravelly sandy loam underlain by granitic gneiss	Excessively to well drained
	MINDEN	loam Typic Humusol	Sedge and woody peat	Very poorly drained
	MONTEGISE	sandy loam Orthic Humic-Ferri-Podsol	Noncalcareous very stony loam fill of granitic origin	Excessively to well drained
	NAYAN	loam Orthic Melanic Brunisol	Grass, sedge, moss, oak and woody peat underlain by limestone bedrock	Very poorly drained
	OSKANE	loam Undifferentiated	Undifferentiated	Very poorly drained
	OSKANE	loam Orthic Melanic Brunisol	Calcareous moderately stony loam fill	Excessively to well drained
	OSKANE	sandy loam Orthic Melanic Brunisol	Calcareous moderately stony loam fill	Excessively to well drained
	PEREGRIN	loam Terric Humic Humusol	Moss, grass and woody peat underlain by clayey material	Very poorly drained
	ROCKCOTT	sandy loam Gleysol Melanic Brunisol	Calcareous stony loam fill	Imperfectly drained
	ROSLAND	loam Rich outwash	Rich outwash	Very poorly drained
	SEVEN	loam Terric Humusol	Grass, moss and reed peat underlain by very fine sand to silt	Very poorly drained
	SHEDGATE	loam Terric Humic Humusol	Grass, moss and reed peat underlain by sandy clay loam to clay	Very poorly drained
	SMUCKE	silty clay loam Orthic Humic Gleysol	Calcareous lacustrine silty and clayey	Poorly drained
	SOLMSVILLE	loam Gleysol Gray Brown Brunisol	Calcareous lacustrine clay loam over loam fill	Imperfectly drained
	SOLMSVILLE	silty clay loam Gleysol Gray Brown Brunisol	Calcareous lacustrine silty clay loam over loam fill	Imperfectly drained
	ST. CROIX	sandy loam Orthic Gleysol	Noncalcareous fine sandy loam alluvium underlain by marble	Poorly drained
	ST. CROIX	silt loam Orthic Gleysol	Noncalcareous fine sandy loam alluvium underlain by marble	Poorly drained
	ST. PETERS	gravelly sandy loam Orthic Humic-Ferri-Podsol	Noncalcareous gravelly outwash	Excessively to well drained
	TALLON	sandy loam Terric Humusol	Sedge, moss and woody peat underlain by fine sand to silt	Very poorly drained
	TEGUMETH	sandy loam Gleysol Brunisolic Gray Brown Brunisol	Calcareous sandy outwash	Imperfectly drained
	TIOGA	sandy loam Brunisolic Gray Brown Brunisol	Weakly calcareous sandy outwash	Excessively to well drained
	TRENT	loam Gleysol Brunisolic Gray Brown Brunisol	Calcareous lacustrine fine sandy loam to silt loam	Imperfectly drained
	TRENT	silt loam Gleysol Brunisolic Gray Brown Brunisol	Calcareous lacustrine fine sandy loam to silt loam	Imperfectly drained
	TWED	sandy loam Orthic Melanic Brunisol	12 to 18 inches of silty sandy loam washed from marble	Excessively to well drained
	UMTHOFF	loam Typic Humusol	Sedge, moss, reed and woody peat	Very poorly drained
	YESPEA	loam Typic Humusol	Grass and moss peat	Very poorly drained
	VALENTINE	silty clay loam Terric Humusol	Grass, sedge and moss peat underlain by fine sandy loam or gravel	Very poorly drained
	WAIPOOS	loam Orthic Gray Brown Brunisol	Calcareous lacustrine silty clay loam over loam fill	Well drained
	WAIPOOS	loam Terric Humusol	Rich, moss and reed peat underlain by fine sandy loam or gravel	Very poorly drained
	WEAVER	loamy sand Gleysol Humic-Ferri-Podsol	Noncalcareous, very stony sandy loam fill of granitic origin	Imperfectly drained
	WINDIGO	loamy sand Orthic Humic-Ferri-Podsol	Noncalcareous sandy outwash	Excessively drained
	WHITE LAKE	sandy loam Invasible Humic-Ferri-Podsol	Calcareous coarse gravel	Excessively drained

NOTE: Mapping units with black boxes do not occur on this sheet.



Soil information by the Ontario Institute of Pedology. Compiled, drawn and published by the Cartography Section, Land Resources Research Institute, Research Branch, Agriculture Canada. Base information and printing for Agriculture Canada, by the Directorate of Map Production, Department of Energy, Mines and Resources.



SOILS OF PETERBOROUGH COUNTY ONTARIO SOUTH SHEET

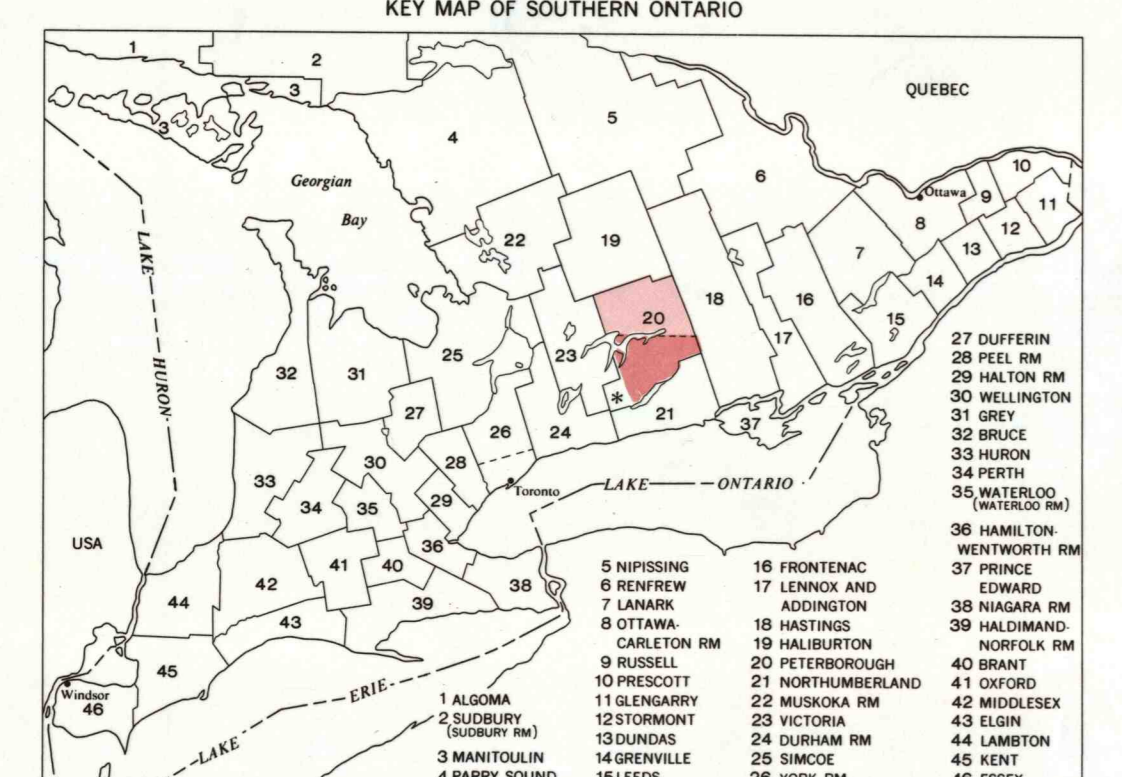
SOIL SURVEY REPORT NO. 45

Scale 1 inch to 1 mile or 1:63,360
 0 500 1000 2000 3000 4000 5000 6000 Meters

NOTE: Mapping units with blank colour boxes do not occur on this sheet.

REFERENCE

main highway	—
secondary highway	—
other roads	—
cart track, trail	—
Railways	—
multiple track	—
single track	—
Horizontal control point	—
Bench mark	—
Spot elevation	—
Contour	—
County boundary	—
Township boundary	—
Indian reserve, park	—
Power transmission line	—
Intermittent or seasonal stream	—
Contours	—
elevation	—
depression	—
Contour interval 80 feet	—



Soil information by the Ontario Institute of Technology
 Composite maps and published by the Cartography Section, Land Resources Research Institute, Research Branch, Agriculture Canada
 Base information and printing for Agriculture Canada, by the Cartography of Map Production, Department of Energy, Mines and Resources.

TOPOGRAPHIC CLASSES

Simple Topography	Multiple Slopes	Complex Topography
Slope percent	Slope percent	Slope percent
A — Depressional to level	a 0 — 0.5	
B — Very gently sloping	b 0.5 — 2.0	
C — Gently sloping	c 2.0 — 4	
D — Moderately sloping	d 4 — 8	
E — Steeply sloping	e 8 — 15	
F — Very steeply sloping	f 15 — 30	
1 — Slightly stony	4 — Slightly rocky	
2 — Moderately stony	7 — Moderately rocky	
3 — Very stony	8 — Very rocky	
4 — Exceedingly stony	9 — Exceedingly rocky	

CONVENTION

Examples: Yes No Map Unit

1. Topography — Slopes or Rockiness (more than 5%)

2. Soil survey texture reaction denotes shallow till phase. In a map symbol composed of two map units the first is dominant (more than 50%).

LEGEND

MAP SYMBOL	MAP UNIT AND SURFACE TEXTURE	CLASSIFICATION	PARENT MATERIALS	DRAINAGE CLASSES
[Symbol]	FRANKTOWN loam	Gleyed Malinic Brunol	Less than 12 inches of loam underlain by limestone rock	Imperfectly drained
[Symbol]	GALWAY sandy loam	Gleyed Dyamic Brunol	Noncalcareous loam and sandy loam alluvium over moles	Imperfectly drained
[Symbol]	GRANBY sandy loam	Orthic Humic Gleyol	Calcareous sandy outwash	Poorly drained
[Symbol]	HARNEY loam	Orthic Humic Gleyol	Calcareous very stony loam till	Poorly drained
[Symbol]	HASTY sandy loam	Typic Humol	Rath, sedge, moss and woody peat	Very poorly drained
[Symbol]	KENABEE loam	Orthic Humic Gleyol	Noncalcareous sandy outwash	Poorly drained
[Symbol]	LONG sandy loam	Orthic Malinic Brunol	12 to 30 inches of moderately stony loam underlain by limestone rock	Well drained
[Symbol]	LOBERTO loam	Typic Humol	Sedge, moss and woody peat underlain by till	Very poorly drained
[Symbol]	LYONS loam	Orthic Humic Gleyol	Calcareous stony loam till	Poorly drained
[Symbol]	MALARD sandy loam	Gleyed Humo-Ferri Podzol	Noncalcareous sandy outwash	Imperfectly drained
[Symbol]	MARSH	Undifferentiated		Very poorly drained
[Symbol]	METHUEN	Orthic Dyamic Brunol	Less than 12 inches of gravelly sandy loam underlain by granitic gneiss	Excessively to well drained
[Symbol]	MINDEN	Typic Humol	Sedge and woody peat	Very poorly drained
[Symbol]	MONTAGUE sandy loam	Orthic Humo-Ferri Podzol	Noncalcareous very stony sandy loam till of granitic origin	Excessively to well drained
[Symbol]	NAVAHAN	Typic Humol	Gross, sedge, moss, rush and woody peat underlain by limestone bedrock	Very poorly drained
[Symbol]	ORGANIC	Undifferentiated		Very poorly drained
[Symbol]	OTONABEE loam	Brunol	Calcareous moderately stony loam till	Excessively to well drained
[Symbol]	OTONABEE sandy loam	Orthic Malinic Brunol	Calcareous moderately stony loam till	Excessively to well drained
[Symbol]	PEPPERLAW	Typic Fibric Humol	Moss, grass and woody peat underlain by clayey materials	Very poorly drained
[Symbol]	ROCKCROFT sandy loam	Gleyed Malinic Brunol	Calcareous stony loam till	Imperfectly drained
[Symbol]	ROCKLAND		Rock outcrop	
[Symbol]	SEVEN	Typic Humol	Gross, moss and reed peat underlain by very fine sand to silt	Very poorly drained
[Symbol]	SHELDRAKE	Typic Fibric Humol	Gross, moss and reed peat underlain by sandy clay loam to clay	Very poorly drained
[Symbol]	SMICOE	Orthic Humic Gleyol	Calcareous lacustrine silts and clays	Poorly drained
[Symbol]	SOLMESVILLE clay loam	Gleyed Gray Brown loam	Calcareous lacustrine clay loam over loam till	Imperfectly drained
[Symbol]	SOLMESVILLE silty clay loam	Gleyed Gray loam	Calcareous lacustrine clay loam over loam till	Imperfectly drained
[Symbol]	ST. CROIX sandy loam	Orthic Gleyol	Noncalcareous fine sandy loam alluvium underlain by moles	Poorly drained
[Symbol]	ST. CROIX silt loam	Orthic Gleyol	Noncalcareous fine sandy loam alluvium underlain by moles	Poorly drained
[Symbol]	ST. PETERS gravelly sandy loam	Orthic Humo-Ferri Podzol	Noncalcareous gravelly outwash	Excessively to well drained
[Symbol]	TALSON	Typic Humol	Sedge, rush and woody peat underlain by fine sand to silt	Very poorly drained
[Symbol]	TECUMSEH sandy loam	Gleyed Brunolic Gray Brown loam	Weakly calcareous sandy outwash	Imperfectly drained
[Symbol]	TROGA sandy loam	Brunol	Calcareous lacustrine fine sandy loam to all loam	Imperfectly drained
[Symbol]	TRENT fine sandy loam	Gleyed Brunolic Gray loam	Calcareous lacustrine fine sandy loam to all loam	Imperfectly drained
[Symbol]	TRENT silt loam	Orthic Malinic Brunol	12 to 18 inches of fine sandy loam weathered from moles	Excessively to well drained
[Symbol]	TYWED sandy loam	Typic Humol	Sedge, moss, reed and woody peat	Very poorly drained
[Symbol]	URTHOFF	Typic Humol	Gross and moss peat	Very poorly drained
[Symbol]	VALENTINE	Typic Humol	Gross, sedge and moss peat underlain by fine sandy loam or gravel	Very poorly drained
[Symbol]	WAIPOOS silty clay loam	Orthic Gray Brown loam	Calcareous lacustrine silty clay loam over loam till	Well drained
[Symbol]	WASHBURN	Typic Humol	Reed, rush and moss peat underlain by fine sand to silt	Very poorly drained
[Symbol]	WEATISS loamy sand	Gleyed Humo-Ferri Podzol	Noncalcareous, very stony sandy loam till of granitic origin	Imperfectly drained
[Symbol]	WENIGO loamy sand	Orthic Humo-Ferri Podzol	Noncalcareous sandy outwash	Excessively drained
[Symbol]	WHITE LAKE sandy loam	Calcareous cone gravel		Excessively drained